



Australian Government  
Centre for Population

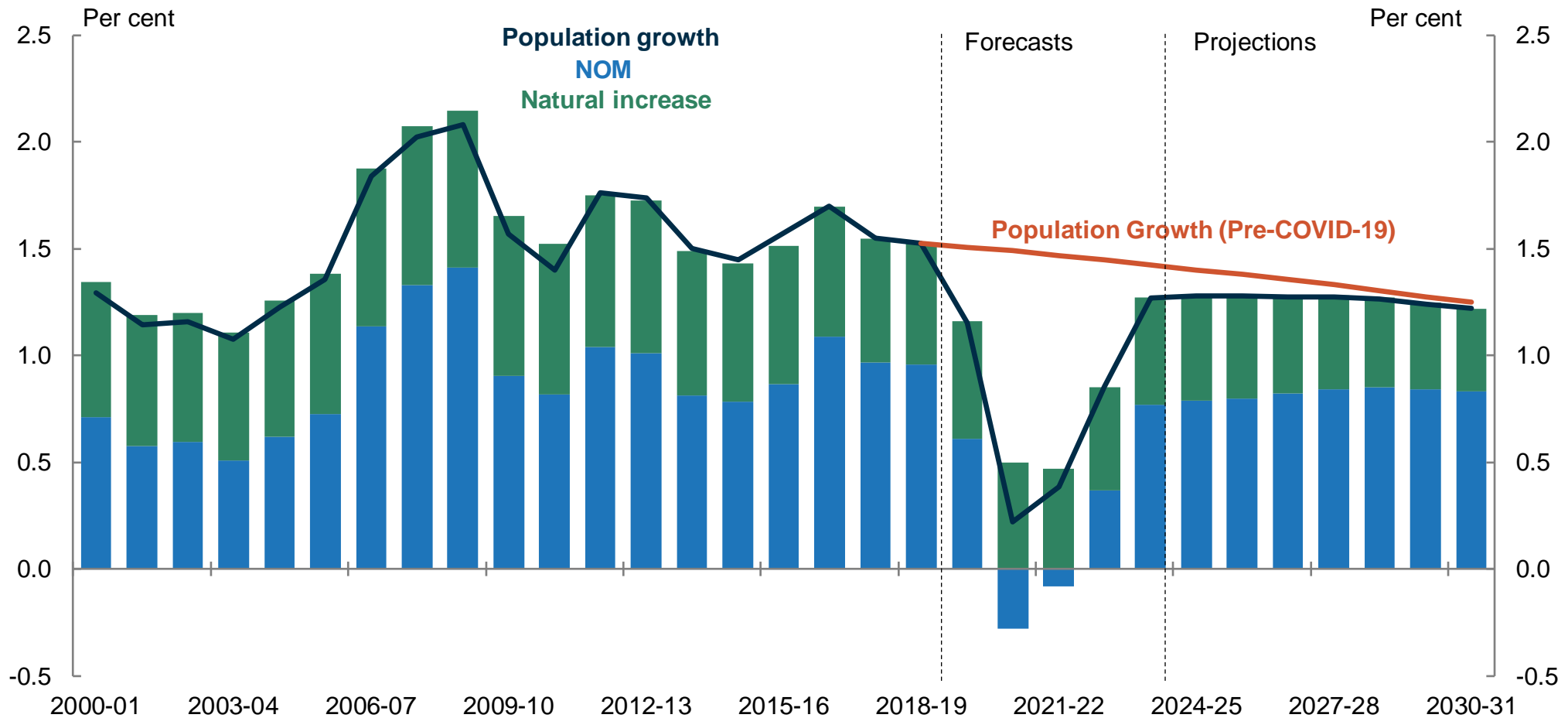
# A story of the stayers: COVID impacts on regional population movement

March 2021



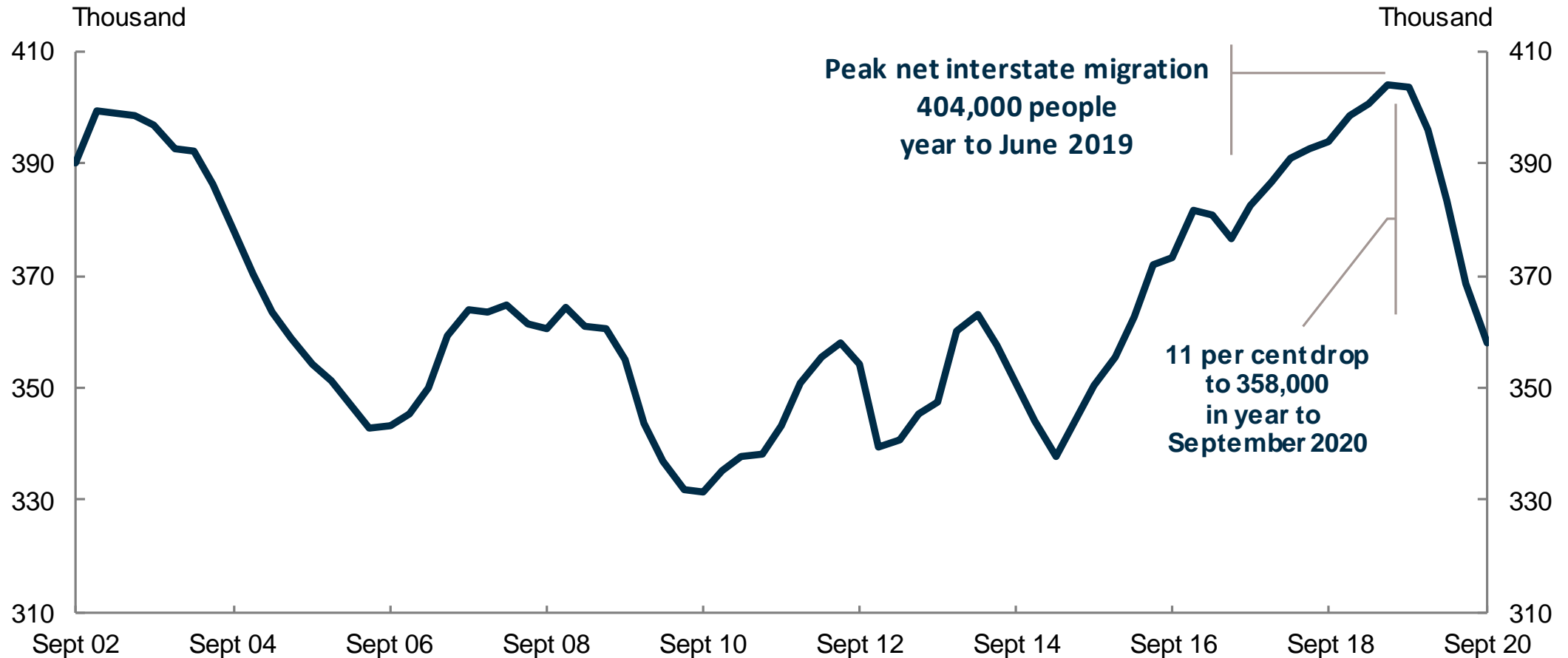
# COVID-19 will make our population smaller and older than was projected before the pandemic

Components of population growth, forecasts and projections, Australia, 2018-19 to 2030-31



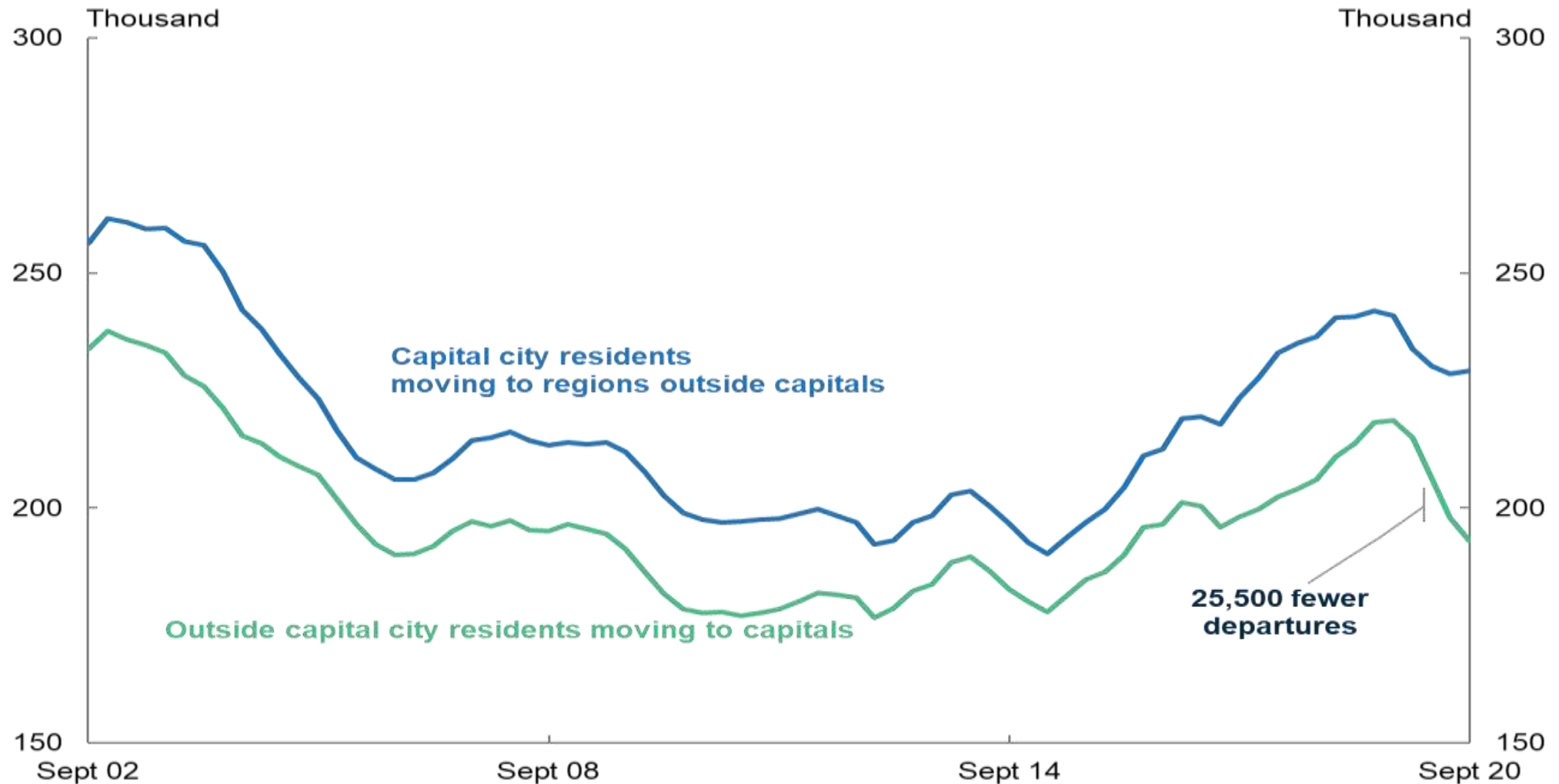
# COVID-19 is reducing how many people move

Provisional Regional Internal Migration Estimates (PRIME) data shows that COVID-19 has reduced the number of people moving interstate by 11 per cent in the 12 months to September 2020

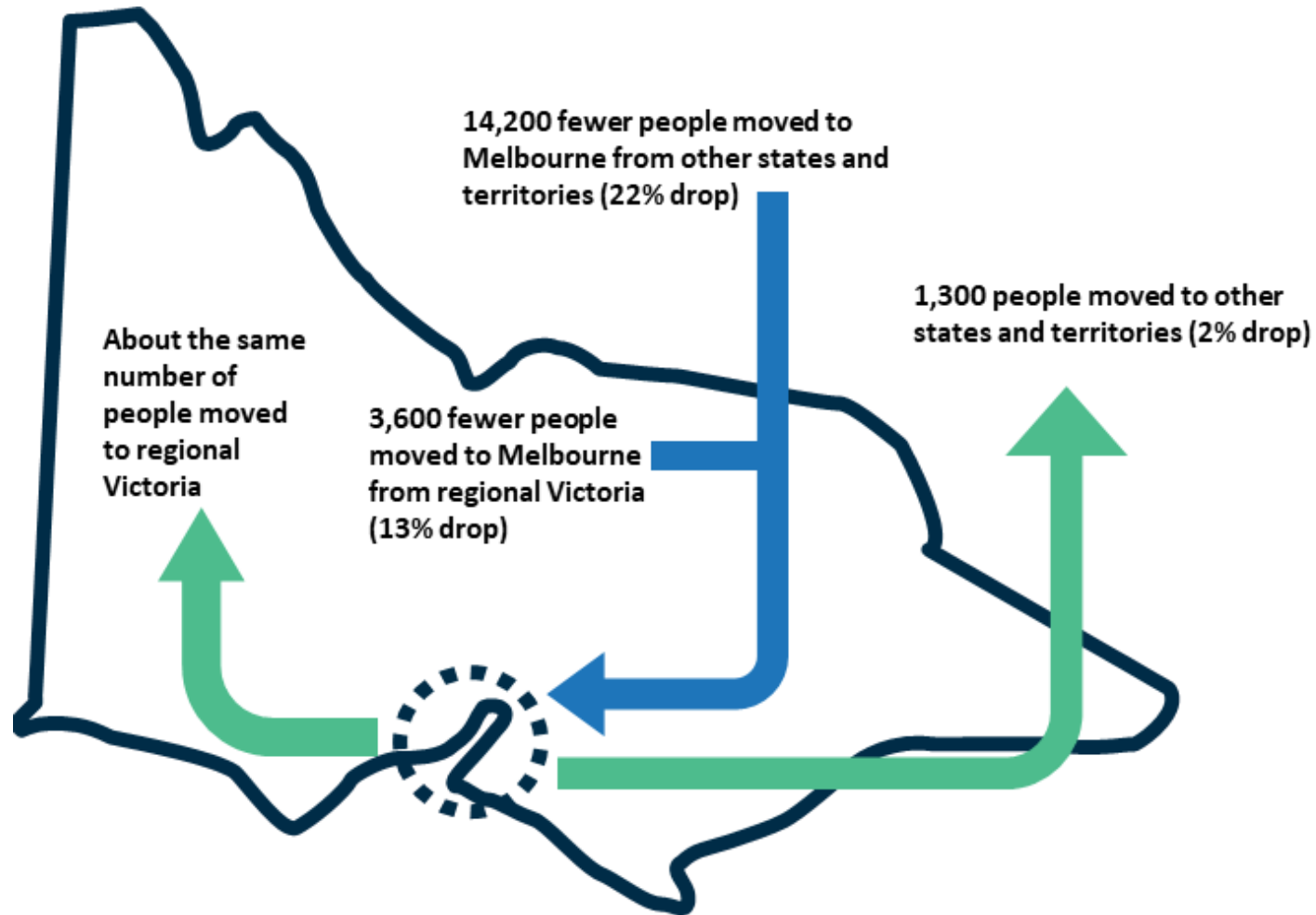


# Regional areas have had their largest net gain on record

People are staying in the regions rather than moving to cities



# There was a large drop in people moving to Melbourne due to the second wave



# Potential drivers for changes in patterns of regional migration

**Economic/market  
uncertainty and  
domestic  
lockdowns**



**Working  
from home**



**Restrictions on  
international  
borders**



**Impact on young  
adults**





**Australian Government**  

---

**Centre for Population**

***Strong evidence***

***Deep insights***

***Collaborative approach***

[www.population.gov.au](http://www.population.gov.au)