

TSBE Health



TSBE Overview

- Established 2011
- \$60B Surat Basin CSG infrastructure
- 20% funded by 3 Councils
 - Toowoomba
 - Western Downs
 - Maranoa
- 80% funded by industry



TSBE Overview

- 25 staff
- Link business with opportunity to create sustainable growth and diversity in the region
- Cover three LGAs – united voice for businesses
- 450 members



TSBE Departments

Focus on

- Energy and Infrastructure
- Food and Agriculture
- Health

Why health?

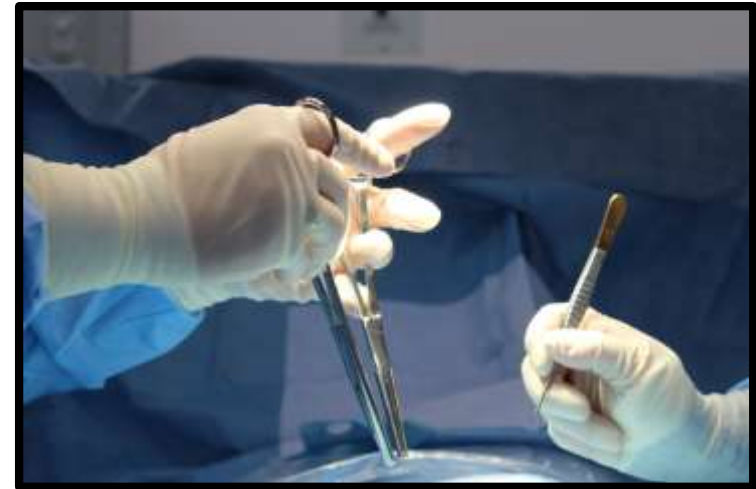
- Number 1 employer in region (15%)
- Number 3 contributor to GRP (9%)
- The right person came along to deliver



TSBE Health

Grow the economy through health

- MOU with 4 major players
 - Darling Downs Health Service
 - St Andrew's Private Hospital
 - St Vincent's Private Hospital
 - PHN
- CEOs are TSBE Health Advisory Board
- Each contributes Diamond Membership (\$30k)
- Funds role in TSBE to grow health sector



TSBE Health

1) Workforce attraction

- Specialists - final year registrar dinners
- Promoting the liveability of region
- Live Toowoomba magazine

2) Patient retention

- TV commercials to promote private health expertise
- Media and marketing – celebrate good news stories



TSBE Health

3) Investment attraction

- New businesses to town
- Allied health, specialists

4) Workplace Wellness

- Improving health of workforce improves profitability
 - A healthy workforce is more productive
 - Lower Workcover premiums
- Wellness coordinators
- Partnership with private health insurer



TSBE Health

5) Innovation

- Optometry –assisting private company in telehealth for remote QLD. Will provide jobs in Toowoomba and service in remote communities.
- Mobile allied health van
- Heart of Australia – TSBE linked Rolf Gomes (cardiologist) to gas industry
- Long term play – developing Toowoomba as a showcase for virtual care.



TSBE Health

Pillars

6) Networking

- Women in health
- Regional Medical Specialists seminar
- Dalby Health Harvest – GPs, specialists and allied health
- GP Better Business Series
- Small group networking



TSBE Health

Pillars

Other

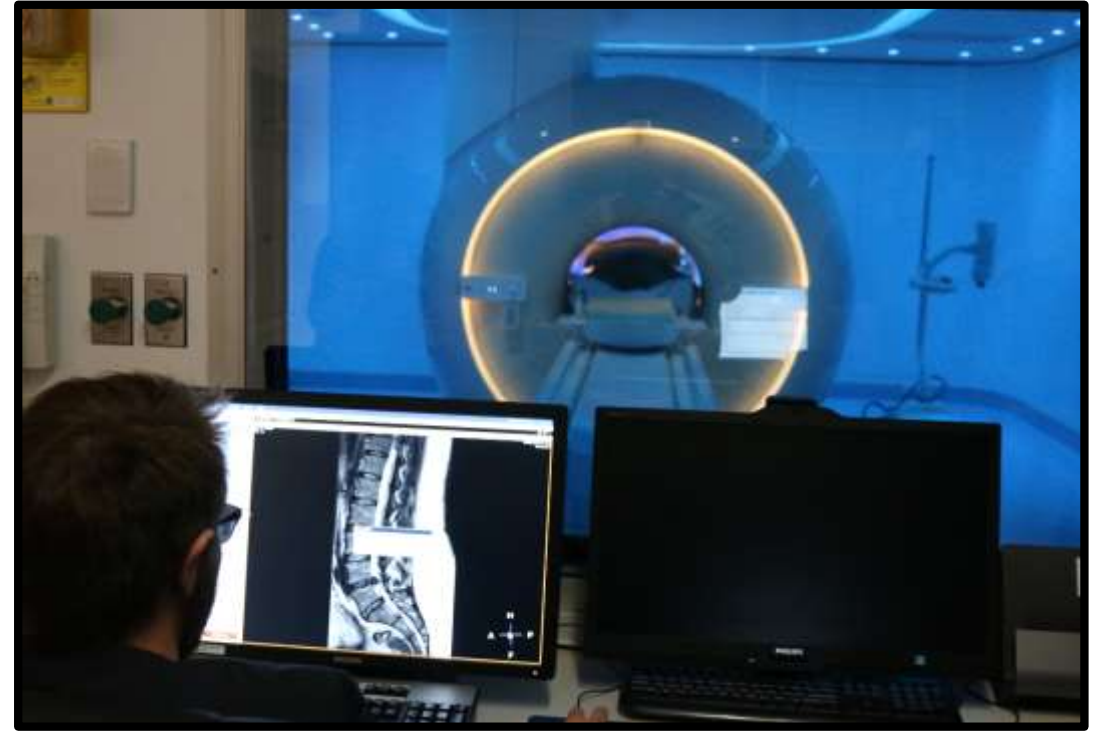
- Waste project – hospitals spend \$750k on waste per year. \$100k grant funding for pilot. Waste to energy.
- Health 2030 Deloitte document
- Grant funding
 - \$200k training for telehealth and IT
 - \$300k other smaller grants such as hospital equipment



The Future

Growing health is a long term strategy

- Connecting health to schools for future workforce
- Attracting parallel businesses eg manufacturing of bionic limbs
- Telehealth and technology
- Long-term discussions with specialists of tomorrow. Takes 2-3 years.





Thank you!

Ali Davenport
CEO of TSBE

